

## MEMORANDUM

To: Nicholas Flodstrom  
SunCode LLC

From: Ashley Payne  
Max Forsman  
Kimley-Horn and Associates, Inc.

Date: January 21, 2026

Subject: *Blackberry Township, Kane County, Illinois – Douglas Family Farm Butterfly Garden and Solar Farm LLC Drain Tile Memorandum*

---

## INTRODUCTION

Kimley-Horn was contracted by SunCode LLC to review the Douglas Family Farm Butterfly Garden and Solar Farm LLC project study area for potential drain tile locations. The study area is located in the Blackberry Township, Kane County, Illinois and is approximately 34 acres in size, located in Sections 34 and 35 of Township 39N, Range 7E. Kimley-Horn reviewed available background data to assist in determining if there are any potential drain tile locations in the study area.

## DATA REVIEWED:

- USGS Topography (See **Figure 1**)
- National Hydrography Dataset (See **Figure 2**)
- National Wetlands Inventory (See **Figure 2**)
- LiDAR (See **Figure 2**)
- Kane County Soil Survey (See **Figure 3**)
- Available historic aerials from Google Earth (See **Appendix A**)

## CONCLUSIONS AND RECOMMENDATIONS:

Based on hydric soil areas, existing topography, and historic aerials from Google Earth and Kane County, several drain tile lines are visible throughout the study area. See **Figure 4** for potential drain tile locations. Based on the desktop review, drain tile is anticipated within the study area and a drain tile survey is recommended prior to construction.

If you have any questions or concerns, please feel free to contact Ashley Payne via phone (507.216.0763) or email (ashley.payne@kimley-horn.com), or Max Forsman via phone (952.905.2910) or email (max.forsman@kimley-horn.com).

Sincerely,

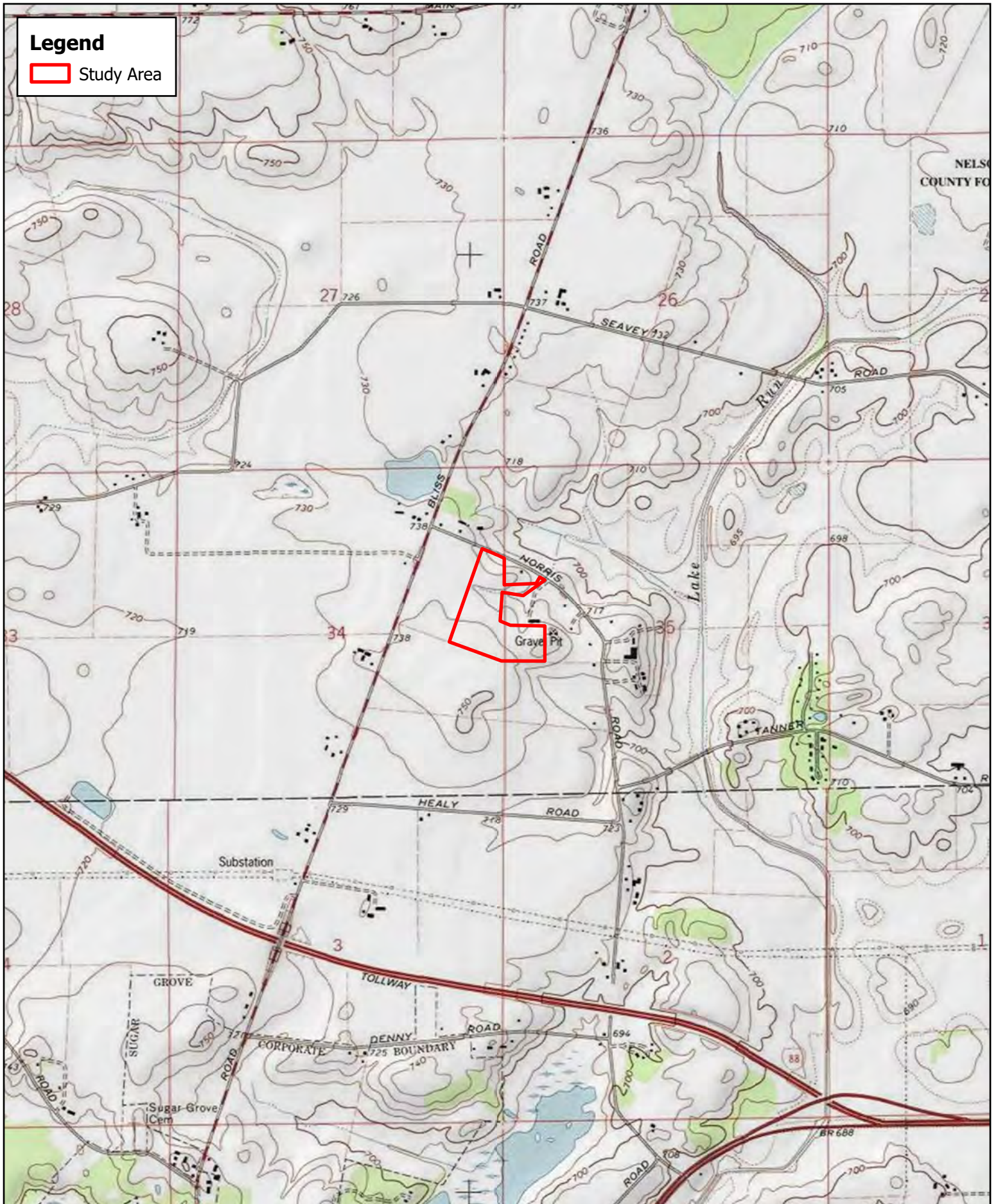


Ashley Payne, Kimley-Horn

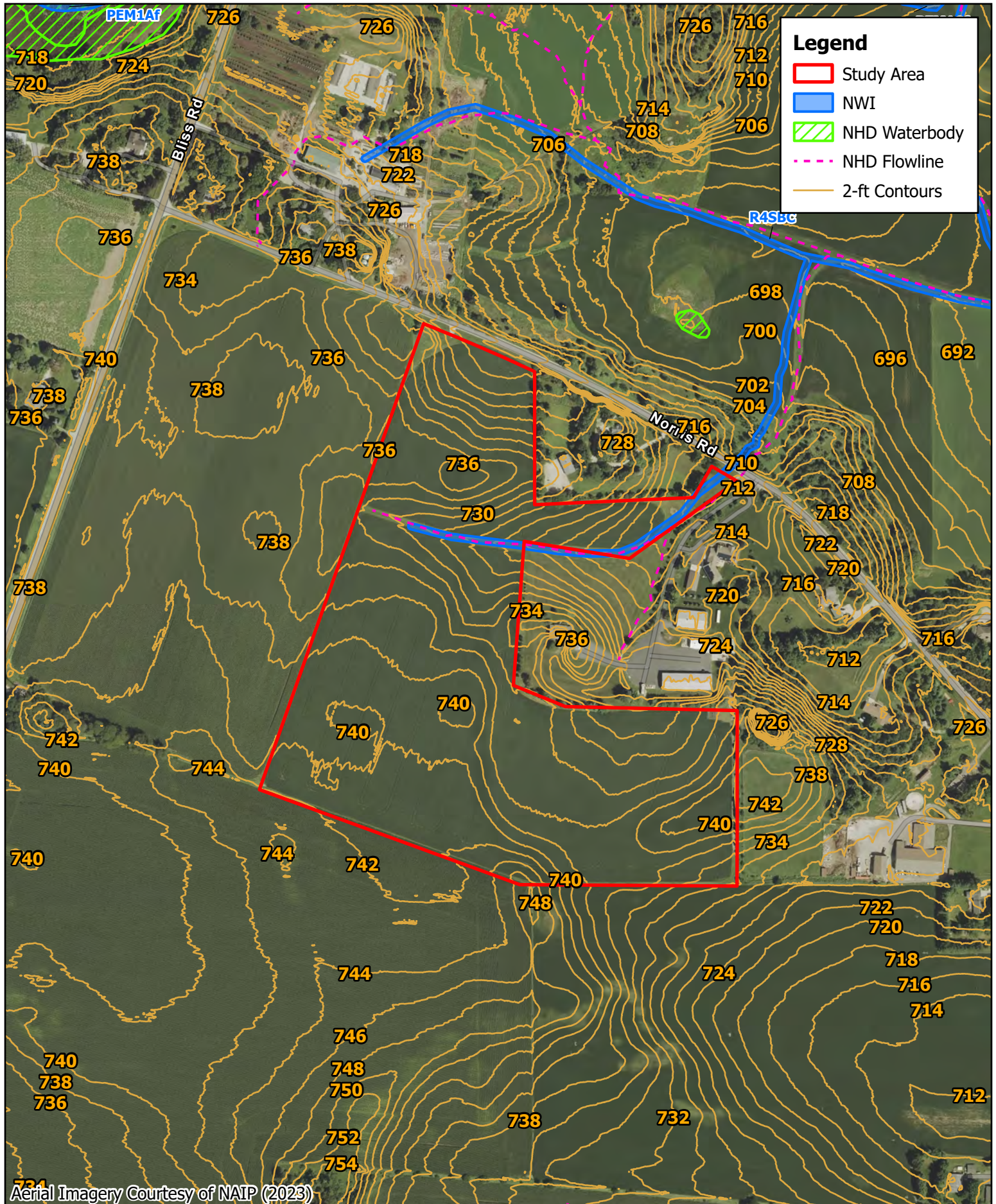


Max Forsman, Kimley-Horn

# Figures



**Figure 1. USGS Topographic Map**  
 Blackberry Township, Kane County  
 SunCode LLC

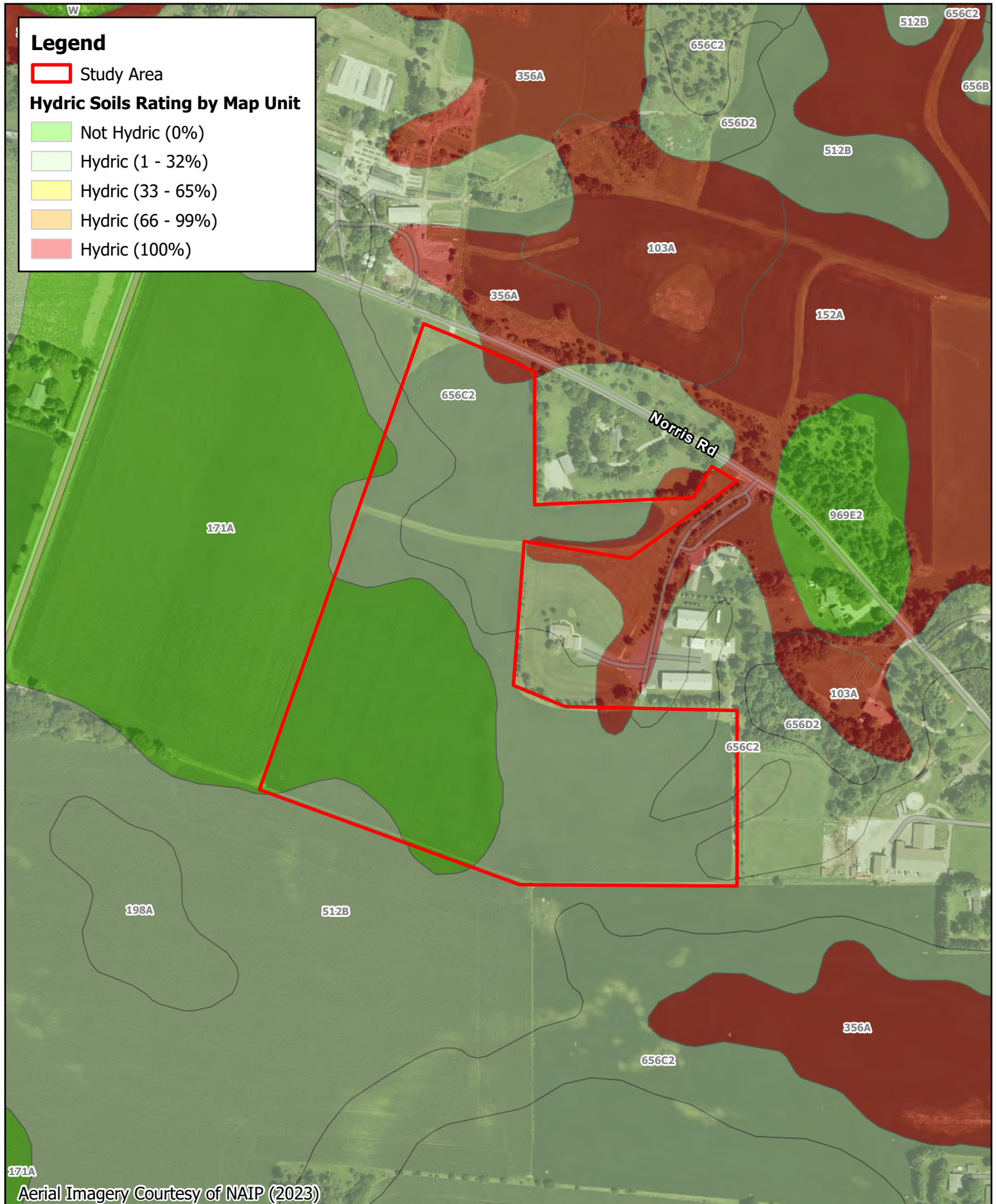


**Legend**

- Study Area
- NWI
- NHD Waterbody
- NHD Flowline
- 2-ft Contours

Aerial Imagery Courtesy of NAIP (2023)

**Figure 2. NWI, NHD, and 2-ft Contours**  
 Blackberry Township, Kane County  
 SunCode LLC

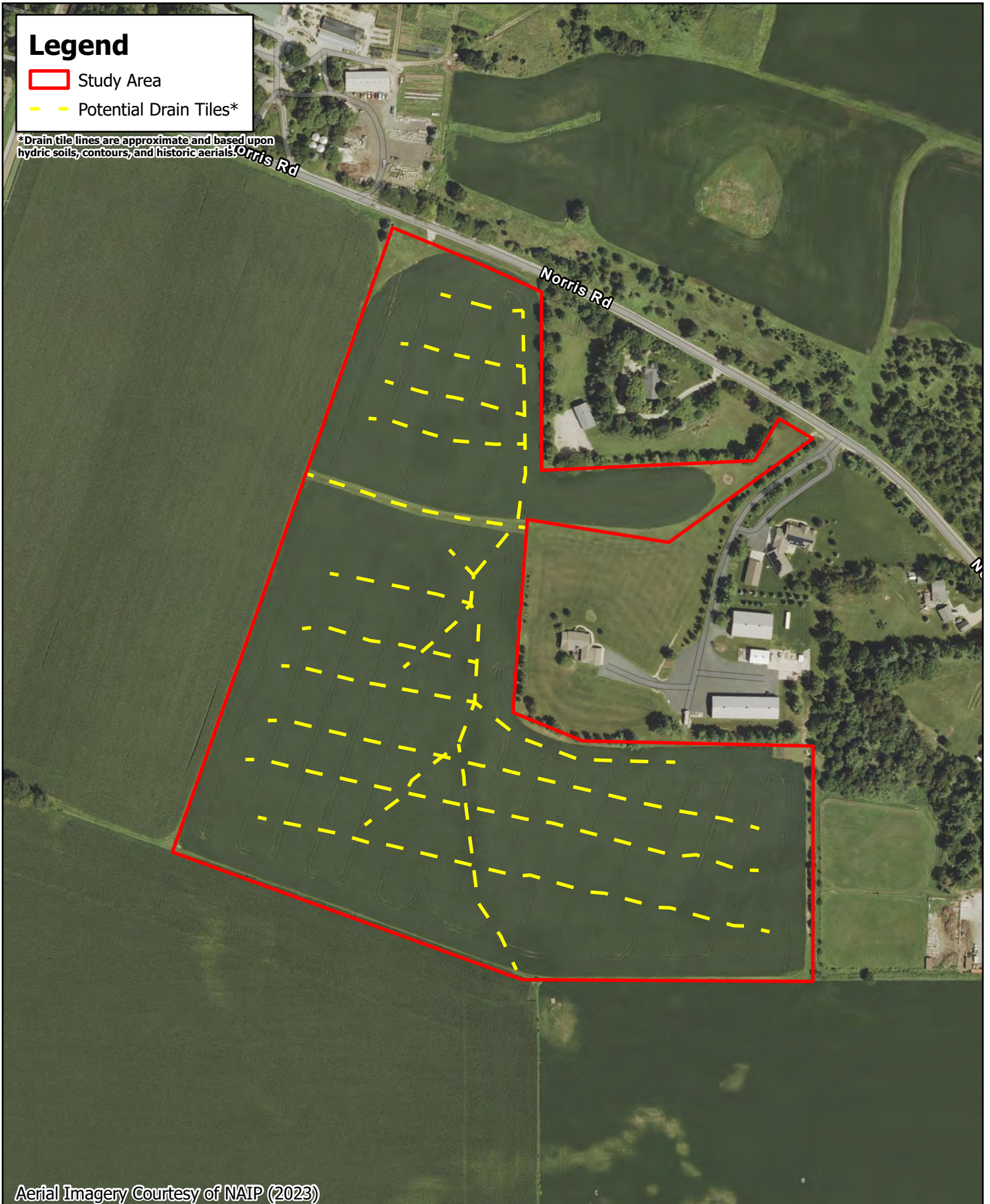


**Figure 3. Hydric Soils Rating**  
Blackberry Township, Kane County  
SunCode LLC

# Legend

- Study Area
- Potential Drain Tiles\*

\*Drain tile lines are approximate and based upon hydric soils, contours, and historic aeriels.



Aerial Imagery Courtesy of NAIP (2023)




**Figure 4. Potential Drain Tile Locations**  
Blackberry Township, Kane County  
SunCode LLC

# ATTACHMENT A

## Historic Aerials

**Legend**

 Study Area

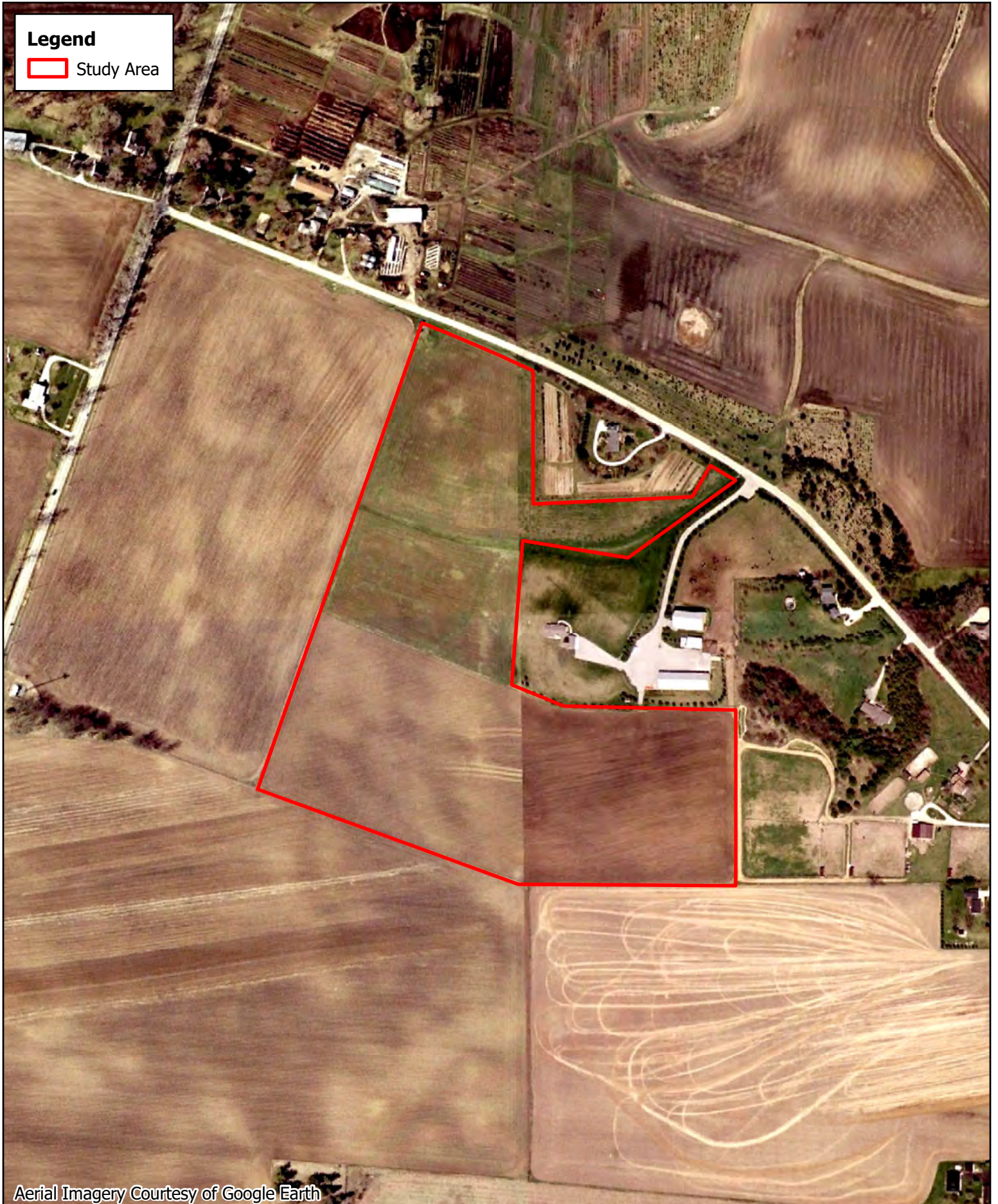


Aerial Imagery Courtesy of Google Earth



**Legend**

 Study Area



Aerial Imagery Courtesy of Google Earth



**Legend**

 Study Area



Aerial Imagery Courtesy of Google Earth



**Legend**


 Study Area



Aerial Imagery Courtesy of Google Earth



**Legend**

 Study Area



Aerial Imagery Courtesy of Google Earth



**Legend**

 Study Area



Aerial Imagery Courtesy of Google Earth



**Legend**

 Study Area



Aerial Imagery Courtesy of Google Earth



**Legend**

 Study Area

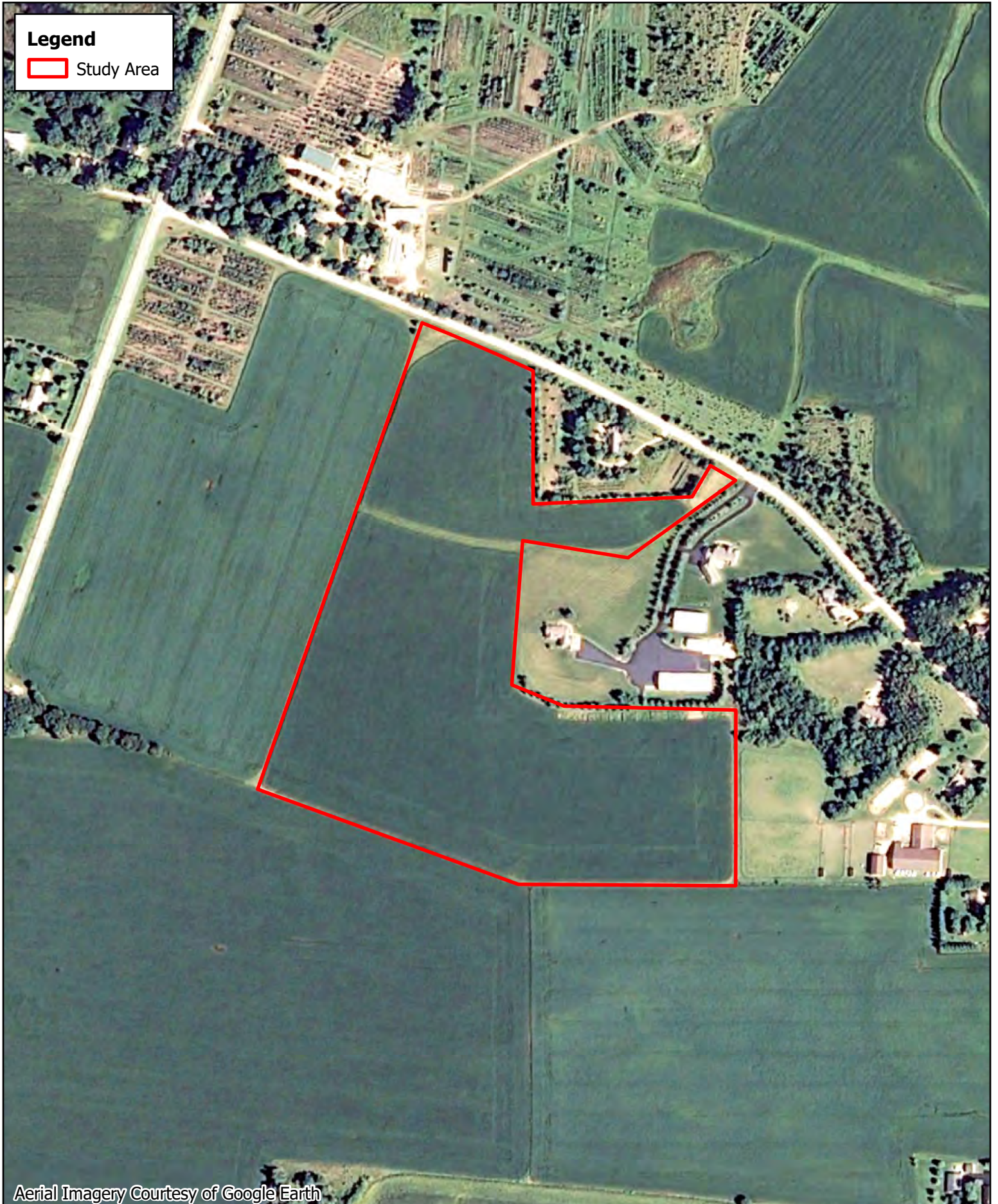


Aerial Imagery Courtesy of Google Earth



**Legend**

 Study Area



Aerial Imagery Courtesy of Google Earth



**Legend**

 Study Area



Aerial Imagery Courtesy of Google Earth



**Legend**

 Study Area



Aerial Imagery Courtesy of Google Earth



**Legend**

 Study Area



Aerial Imagery Courtesy of Google Earth



**Legend**

 Study Area



Aerial Imagery Courtesy of Google Earth

